

Brighter
ACCESS 

Opening doors – enhancing lives



Sapphire City Festival

• FEATURING •

INVERELL'S GOT TALENT HOLY TRINITY RACE DAY
FESTIVAL FUN COLOUR RUN STREET SCIENCE
FINALE EVENING & FIREWORKS MELANIE DYER
ALANA WILKINSON SESAME STREET & MORE

MELANIE DYER



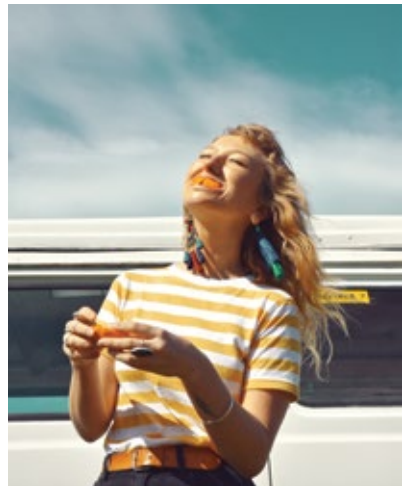
Inverell Sapphire City Festival



STREET SCIENCE



ALANA WILKINSON



SATURDAY 5 OCTOBER

Race For A Cure

Inverell Speedway Reserve,
Ashford Rd Inverell.

A weekend of mower racing to raise funds for MND NSW Ltd. Celebrity races, different categories of racing. BBQ by Inverell Lions. Ice cream and coffee van onsite. \$5 per person over 5yrs. **Cash only**

10:00am - 4:00pm

Ph: 0414 795 358.

SUNDAY 6 OCTOBER

Race For A Cure

Inverell Speedway Reserve,
Ashford Rd Inverell.

A weekend of mower racing to raise funds for MND NSW Ltd. Celebrity races, different categories of racing. BBQ by Inverell Lions. Ice cream and coffee van onsite. \$5 per person over 5yrs. **Cash only**

10:00am - 4:00pm

Ph: 0414 795 358.

Sapphire City Markets

Campbell Park, Inverell.

Presented by Inverell Lions Club from 7am. Market stalls with something for everyone. All welcome.

Ph: 0477 520 721.

PROGRAM OF EVENTS

WEDNESDAY 9 OCTOBER

Sapphire City Open Bowls Carnival

Inverell Sporties Glen Innes Rd.
Over 55.

10am start. Spectators welcome.

Ph: 0427 333 647.

THURSDAY 10 OCTOBER

Sapphire City Open Bowls Carnival

Inverell Sporties Glen Innes Rd.
Ladies Day.

10am start. Spectators welcome.

Ph: 0427 333 647.

FRIDAY 11 OCTOBER

Inverell & District Lapidary Club Meet & Greet

Inverell Lapidary Club,
McIlveen St 6:30pm.

\$25 includes sweets, tea/coffee and lucky door prizes.

Open house at the Clubhouse daily 11th - 18th, 8:30am - 5:30pm.

Ph: 6721 4563.

Spring Splash

Get ready for a wet & wild experience like no other, where the sun-soaked days are filled with laughter, thrills, & refreshing splashes.

3 fantastic inflatable waterslides for you to keep cool this spring. 3 days of fun filled water action.

trybooking.com/CVNZJ

Inverell

Sapphire City Festival

Inverell and District Lapidary Club Gem & Craft Show

Inverell Lapidary Club. Mcllveen St.
8:30am to 5:30pm. Traders, displays
and demonstrations. Catering on-site.
Something for the whole family. Entry by
gold coin donation. Ph: 6721 4563.

Sapphire City Open Bowls Carnival

Inverell Sporties Glen Innes Rd.
Mixed Triples.
10am start. Spectators welcome.
Ph: 0427 333 647.

SATURDAY 12 OCTOBER

Inverell & District Lapidary Club Gem Show

Inverell Lapidary Club, Mcllveen St.
Opens 8:30am. Closes 5:30pm
Traders, displays and
demonstrations. Catering on-site.
Something for the whole family.
Entry by Gold Coin donation
Ph: 6721 4563.

Sapphire City Open Bowls Carnival

Inverell Sporties Glen Innes Rd.
Open Pairs. 10am start.
Spectators welcome.
Ph: 0427 333 647.

Spring Splash

Get ready for a wet & wild experience like
no other, where the sun-soaked days are
filled with laughter, thrills, & refreshing
splashes.

3 fantastic inflatable waterslides for you
to keep cool this spring. 3 days of fun
filled water action.

trybooking.com/CVNZJ

Inverell Art Prize Exhibition Opening

Inverell Art Gallery, 5 Evans St.
Special Feature this year is "3D".
Official Opening 6pm.

\$20 p/p, \$10 p/p under 18. Tickets
available through *Trybooking.com*
Ph: 6722 4983.

SUNDAY 13 OCTOBER

Inverell & District Lapidary Club Gem Show

Inverell Lapidary Club, Mcllveen St.
Opens 8:30am. Closes 5:30pm
Traders, displays and
demonstrations. Catering on-site.
Something for the whole family.
Entry by Gold Coin donation
Ph: 6721 4563.

Inverell & District Lapidary Club Field Trip - Mt Topper Tour

Tour departs from Inverell Lapidary Club,
Mcllveen St.
Registration from 7:30am for an 8:30am
sharp departure.
\$10.00 per person.
Ph: 6721 4563.



PROGRAM OF EVENTS

SUNDAY 13 OCTOBER CONT.

Sapphire City Open Bowls Carnival

Inverell Sporties Glen Innes Rd.

Open Pairs.

10am start. Spectators welcome.

Ph: 0427 333 647.

Spring Splash

Get ready for a wet & wild experience like no other, where the sun-soaked days are filled with laughter, thrills, & refreshing splashes.

3 fantastic inflatable waterslides for you to keep cool this spring. 3 days of fun filled water action.

trybooking.com/CVNZJ

MONDAY 14 OCTOBER

Inverell & District Lapidary Club

Field Trip - Quartzite, Chert & Jasper

Tour departs from Inverell Lapidary Club, McIlveen St.

Registration from 7:30am for an 8:30am sharp departure. \$10.00 per person.

Ph 6721 4563.

Inverell Art Prize Exhibition

Inverell Art Gallery, 5 Evans St.

Special Feature this year is "3D".

Gallery open from 10am. Entry by gold coin donation. Ph: 6722 4983.

TUESDAY 15 OCTOBER

Inverell & District Lapidary Club

Field Trip - Fossils galore

Tour departs from Inverell Lapidary Club, McIlveen St.

Registration from 7:30am for an 8:30am sharp departure. \$10.00 per person.

Ph: 6721 4563.

Inverell Art Prize Exhibition

Inverell Art Gallery, 5 Evans St.

Special Feature this year is "3D".

Gallery open from 10am. Entry by gold coin donation. Ph: 6722 4983.

WEDNESDAY 16 OCTOBER

Inverell & District Lapidary Club

Field Trip - Marble, Chert, Jasper & Flint

Tour departs from Inverell Lapidary Club, McIlveen St.

Registration from 7:30am for an 8:30am sharp departure. \$10.00 per person.

Ph 6721 4563.

Sapphire City Open Bowls Carnival

Inverell Sporties Glen Innes Rd.

Over 55 Open 3 Bowl Pairs.

9:30am start. Spectators welcome.

\$60 per team, including lunch.

Entries close 10th October.

Ph: 6722 1545.

Inverell Art Prize Exhibition

Inverell Art Gallery, 5 Evans St.

Special Feature this year is "3D".

Gallery open from 10am. Entry by gold coin donation. Ph: 6722 4983.

Inverell

Sapphire City Festival

THURSDAY 17 OCTOBER

Inverell & District Lapidary Club Field Trip - Mystery Tour

Tour departs from Inverell Lapidary Club, McIlveen St.

Registration from 7:30am for an 8:30am sharp departure. \$10.00 per person.

Ph: 6721 4563.

Inverell & District Lapidary Club Brag Night

Inverell Lapidary Clubhouse, McIlveen St from 6:30pm. Meals available.

Ph: 6721 4563.

Inverell Art Prize Exhibition

Inverell Art Gallery, 5 Evans St.

Special Feature this year is "3D".

Gallery open from 10am. Entry by gold coin donation. Ph: 6722 4983.

FRIDAY 18 OCTOBER

Inverell & District Lapidary Club Open House

Inverell Lapidary Club, McIlveen St.
8:30am - 5:30pm.

Ph 6721 4563.

Inverell Art Prize Exhibition

Inverell Art Gallery, 5 Evans St.

Special Feature this year is "3D".

Gallery open from 10am. Entry by gold coin donation. Ph: 6722 4983.

Inverell's Got Talent

Presented by Inverell East Rotary.

See finalists perform in Senior, Junior and Best Original Song categories.

Inverell Town Hall. 7pm.

Adults \$15, High School Age \$10 and Younger \$5.

www.trybooking.com/CTXYA

Ph: 0427 506 874.

SATURDAY 19 OCTOBER

Holy Trinity P & F Race Day and Mega Raffle

Family fun day at Inverell races from 12pm.

Purchase a ticket in the Mega Raffle for entry. Tickets \$10. Mega Raffle tickets will be available at the gate.

Ph: 6722 4066.

Inverell Club Lucky 13th Antiques and Collectibles Auction

Inverell Club, Cnr Evans & Campbell Sts. Viewing Friday from 3:30pm & Saturday from 8:30. Auction starts at 10am. A special section of the auction will be the dispersal of the Devine Photographic Collection. Lots of antiques & collectibles. Ph 0400 673 433.

Operation Operating Room Bush Dance.

Inverell Pioneer Village, 64 Tingha Rd. Starts at 6pm.

Dust off your boots for a fun night of dancing to a range of toe tapping tunes. BBQ & dessert included. BYO drink.

Tickets \$40 p/p from Tourism Inverell.

Ph: 0412 087 433

PROGRAM OF EVENTS

SUNDAY 20 OCTOBER

Inverell Pioneer Village Open Day

Village open with displays. Steam engines and static engines operating. Markets with great stalls. Fun for the whole family. 7am - 2pm. Entry by gold coin donation. Ph: 6728 8161.

Inverell RSM Inverell Sports Council Charity Golf Day

Inverell Golf Course, Bundarra Rd.
3 person ambrose. Shotgun Start.
Great Prizes.
Raffles with meat trays up for grabs.
All funds raised go to Inverell Sports Council to be utilised for affiliated sports and sporting facilities.
Ph: 6728 8261 for details.

Festival Music for Pipe Organ & Choirs

Inverell Community Uniting Church,
Rivers St
Celebrating 95 years of the Pipe Organ.
Featuring local Organists and Choirs;

- Bev Lee Chue
- Richard Ward
- Northern Corale
- Inverell Singers

Some favourite hymns as well, plus afternoon tea.
Tickets \$5 at the door

MONDAY 21 OCTOBER

Family History Open Day

Local History Room at Inverell Shire Library in Campbell St.
The friendly volunteers from Inverell District Family History Group will be available to help you with any family history enquiries.
Ph: 0400 455 871.

Inverell Art Prize Exhibition

Inverell Art Gallery, 5 Evans St.
Special Feature this year is "3D".
Gallery open from 10am. Entry by gold coin donation. Ph: 6722 4983.

TUESDAY 22 OCTOBER

Inverell Art Prize Exhibition

Inverell Art Gallery, 5 Evans St.
Special Feature this year is "3D".
Gallery open from 10am. Entry by gold coin donation. Ph: 6722 4983.

WEDNESDAY 23 OCTOBER

Inverell Art Prize Exhibition

Inverell Art Gallery, 5 Evans St.
Special Feature this year is "3D".
Gallery open from 10am. Entry by gold coin donation. Ph: 6722 4983.

Inverell

Sapphire City Festival

Family History Open Day

Local History Room at Inverell Shire Library in Campbell St.

The friendly volunteers from Inverell District Family History Group will be available to help you with any family history enquiries.

Ph: 0400 455 871.

THURSDAY 24 OCTOBER

Inverell Art Prize Exhibition

Inverell Art Gallery, 5 Evans St.

Special Feature this year is "3D".

Gallery open from 10am. Entry by gold coin donation. Ph: 6722 4983.

FRIDAY 25 OCTOBER

Family History Open Day

Local History Room at Inverell Shire Library in Campbell St.

The friendly volunteers from Inverell District Family History Group will be available to help you with any family history enquiries.

Ph: 0400 455 871.

Inverell Art Prize Exhibition

Inverell Art Gallery, 5 Evans St.

Special Feature this year is "3D".

Gallery open from 10am. Entry by gold coin donation. Ph: 6722 4983.

Festival Fun Colour Run

All ages from 5 up. All abilities.

Celebrity Challenge.

Food available.

Best dressed team prize.

Teams of 4.

Varley Oval from 4pm.

Register your team on Trybooking.

www.trybooking.com/CVHOX

SATURDAY 26 OCTOBER

Down to Earth Inverell Garden Group Open Gardens

10am - 4pm.

5 lovely gardens will be open to the public in Brae St and adjoining Streets to raise money for the Westpac

Rescue Helicopter Service. Plant stalls, refreshments, garden ornaments, pottery, florist and Sapphire City Concert Band.

Tickets

- Adults - \$20 multi entry, or \$5 per garden.

- Children 5 & over - \$12 multi entry, or \$3 per garden.

Check the Down to Earth Garden Club Facebook Page for further information, or call 0448 221 250.

Inverell District Darts Tournament

Inverell Sporties, 35 Glen Innes Rd

10am - 6pm.

Annual Darts Tournament. Registration from 9am. Spectators Welcome

Ph: 0435 831 058.

PROGRAM OF EVENTS

SATURDAY 26 OCTOBER CONT.

Inverell Art Prize Exhibition

Inverell Art Gallery, 5 Evans St.
Special Feature this year is “3D”.
Gallery open from 10am. Entry by gold coin donation. Ph: 6722 4983.

FINALE EVENING!

Campbell Park, Inverell.
From 2:30pm.
Food vans, children’s amusements.
Great Duck Race. Makers Market
Fireworks.
Live Entertainment:
• Sapphire City Concert Band
• Street Science
• Sesame Street (Cookie Monster & Elmo)
• Alana Wilkinson
• Melanie Dyer

SUNDAY 27 OCTOBER

Koshiki Karatedo

NSW Country Championships

Holy Trinity Hall, Moore St Inverell
9am start.
Competitors from NSW & QLD.
Spectators Welcome
Ph: 0421 088 006.

Inverell District Darts Tournament

Inverell Sporties, 35 Glen Innes Rd
10am - 2pm.
Annual Darts Tournament continues.
Spectators Welcome
Ph: 0435 831 058.

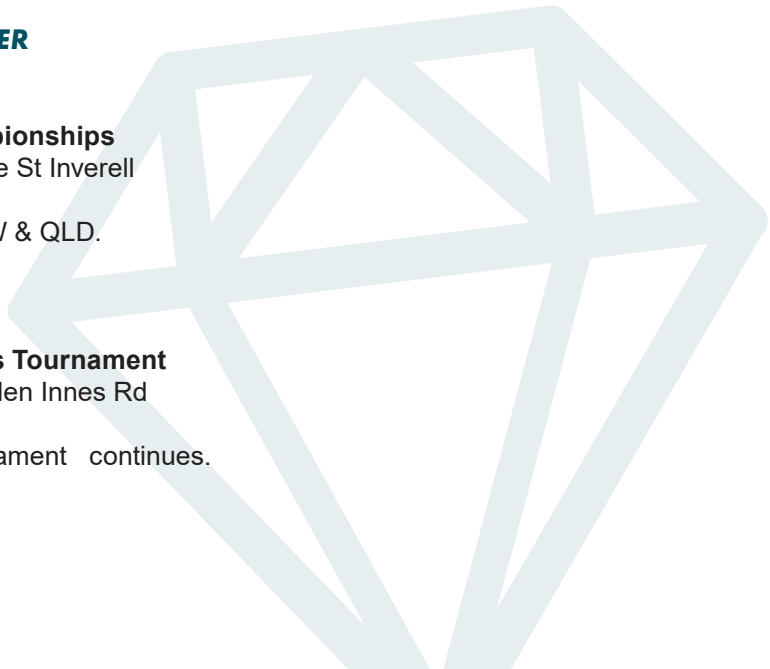
NOVEMBER

Inverell Theatre Co. Production

Inverell Theatre Co presents:
“Robin the Hood”.

Join them for an action packed, mad capped romp through medieval England with Robin the Hood, Maid Marian, Little John, Friar Tuck and many more favourite characters.

1st, 2nd, 7th, 8th and 9th November.
Beaulieu Memorial Theatre,
439 Copeton Dam Rd Inverell.
Tickets \$25 through Trybooking.com
www.trybooking.com/CVGYO
Ph: 0420 927 324.



Brighter
ACCESS 
Opening doors - enhancing lives



October 18th - 20th, 2024

SAPPHIRE
CITY FESTIVAL

FINALE *Event*

SATURDAY
OCTOBER **26** CAMPBELL PARK
INVERELL

FROM **2:30**
PM

LIVE MUSIC

FOOD & DRINK

KIDS ENTERTAINMENT

DUCK RACE

MAKERS MARKETS

FACE PAINTING

& MUCH MORE

MELANIE
DYER



Inverell Sapphire City Festival

PROUDLY SPONSORED BY



Opening doors – enhancing lives



**THE FESTIVAL FIREWORKS SPECTACULAR
IS PROUDLY SPONSORED BY**

**INVERELL
NEWS AGENCY**



**WITH SPECIAL
THANKS TO:** 